

# BRUNSWICK

BROKERS

COMMERCIAL REAL ESTATE

**Brick & Beam Office Space with Modern Vibe**

## FOR LEASE CENTERBEAM PLACE 14 KING STREET

Saint John | NB

**Stephanie Turner**



14 King Street | Saint John, NB  
Stephanie Turner



## Property Highlights

BASE RENT  
**\$14.00 psf**

A much sought-after location for any company seeking an unparalleled work environment of beauty and efficiency. CenterBeam Place comprises a city block of heritage buildings built between 1878-1880, situated at the edge of Saint John Harbour.

These 'brick & beam style' office suites are demisable, offer plenty of large windows and natural light, as well as private elevator access.



**UPTOWN  
LOCATION**



**BOMA BEST  
CERTIFIED SILVER**



**PARKING  
NEARBY**



**ELEVATOR  
ACCESS**



**TRANSIT  
ACCESSIBLE**

**BRUNSWICK**  
BROKERS

12 Smythe St, Suite 104  
Saint John, NB  
E2L 5G5

**Stephanie Turner**  
(506) 333-3442  
sturner@bbrokers.ca  
www.bbrokers.ca



14 King Street | Saint John, NB  
Stephanie Turner



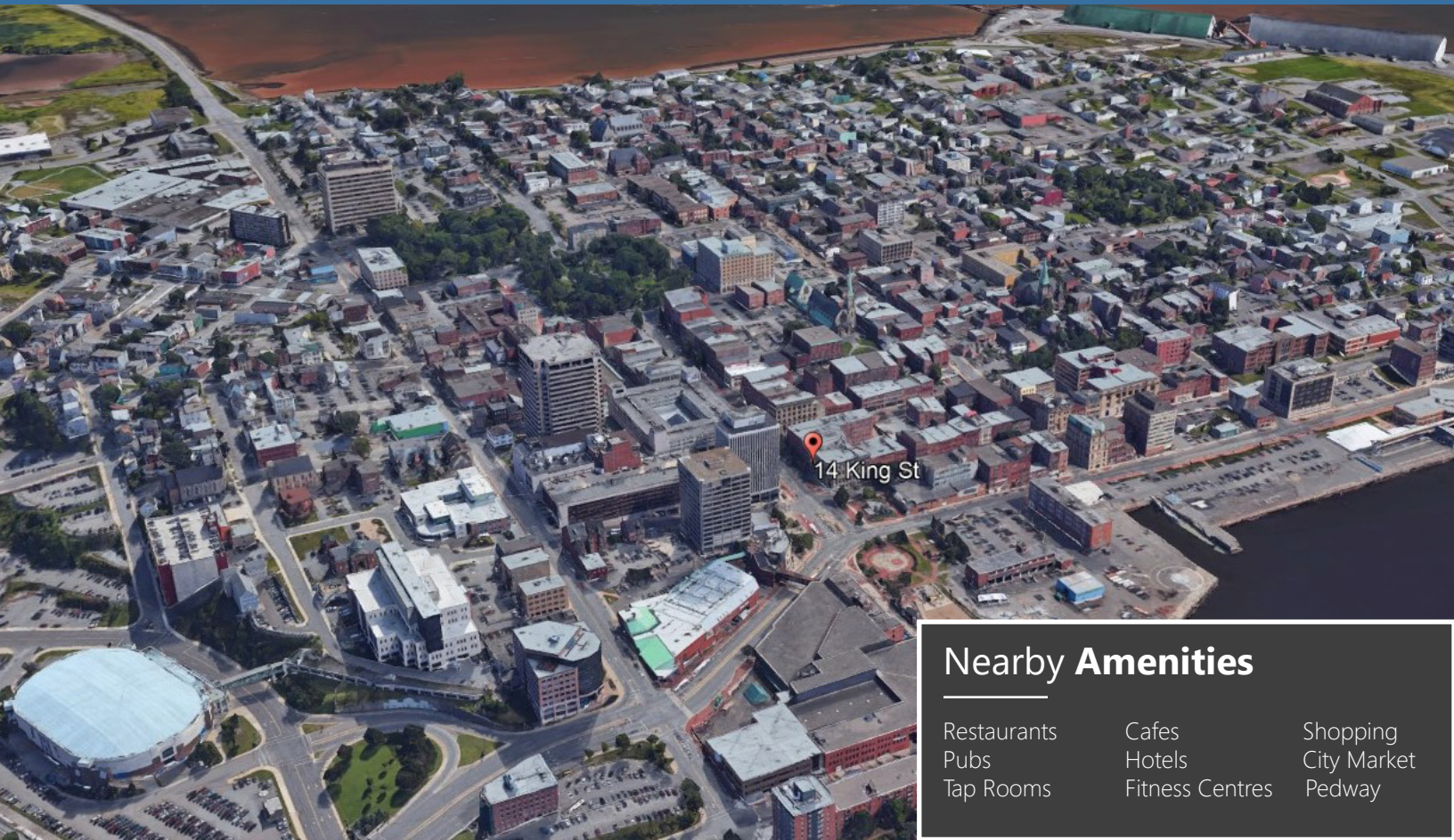
## Property Details

AVAILABLE  
**IMMEDIATELY**

<b>NUMBER OF FLOORS</b>	Four
<b>BUILDING SIZE</b>	123,734 sf
<b>SIZES AVAILABLE</b>	Suite 220: 6,633 sf Suite 300: 9,797 sf Suite 330: 8,381 sf Suite 430: 5,658 sf
<b>MAX CONTIGUOUS SPACE</b>	9,797 sf
<b>MIN DIVISIBLE SPACE</b>	5,658 sf
<b>PARKING</b>	Public and private lots nearby
<b>BOMA BEST LEVEL</b>	Best Certified Silver
<b>TENANT IMPROVEMENT ALLOWANCE</b>	To be negotiated based on tenant, terms & conditions



14 King Street | Saint John, NB  
Stephanie Turner



### Nearby Amenities

Restaurants  
Pubs  
Tap Rooms

Cafes  
Hotels  
Fitness Centres

Shopping  
City Market  
Pedway

## Saint John

<b>2021 POPULATION</b>	130,613
<b>POPULATION INCREASE (2016 - 2021)</b>	3.5
<b>MEDIAN AGE</b>	44.4
<b>AVERAGE HOUSEHOLD INCOME</b>	\$63,737

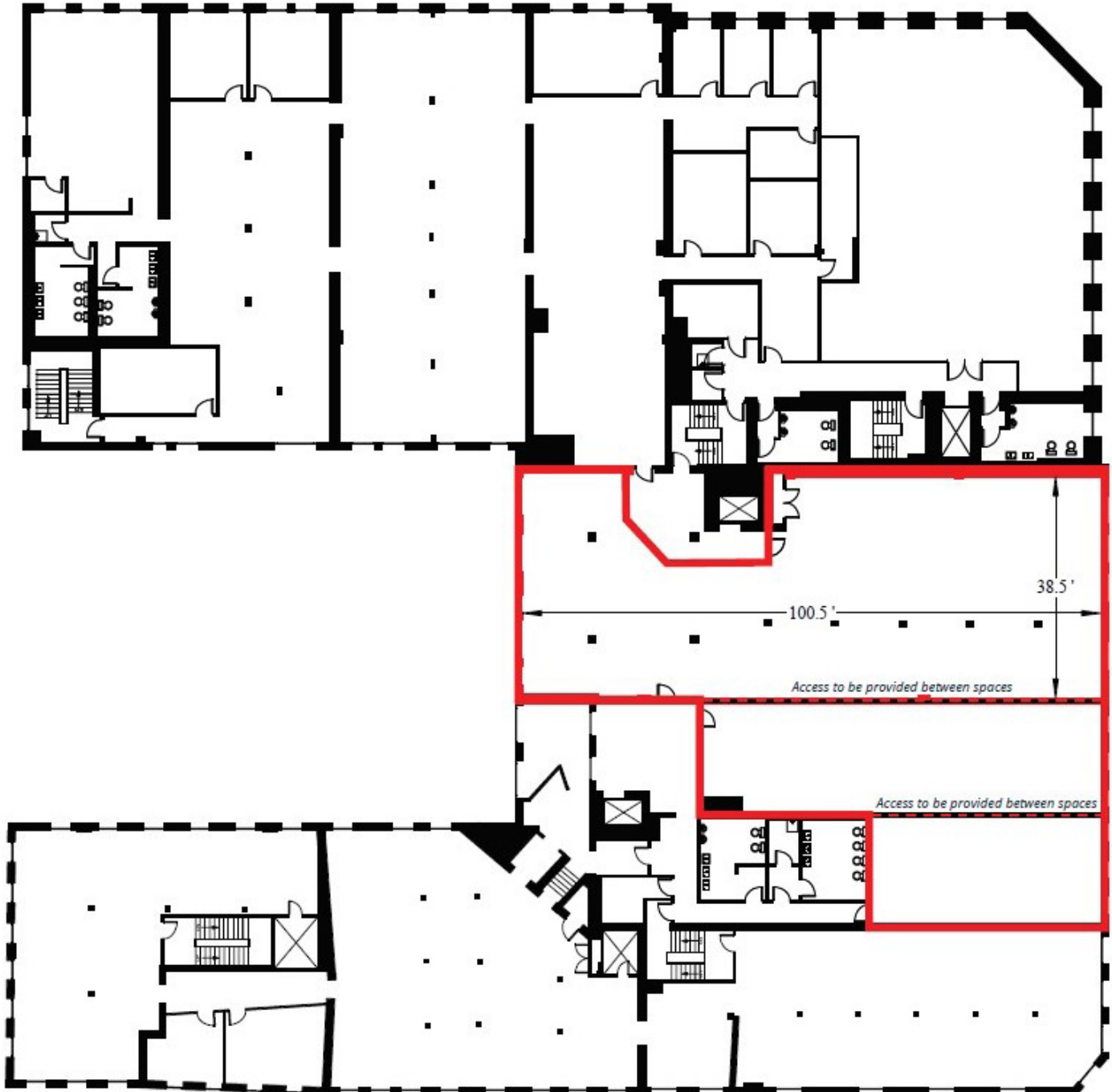


# Property Photos

14 King Street | Saint John, NB  
Stephanie Turner



**SUITE 220**  
6,633 sf

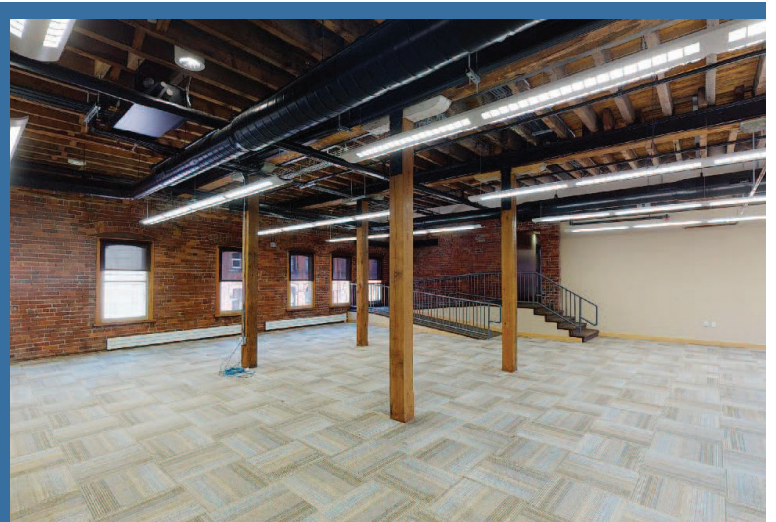


14 King Street | Saint John, NB  
Stephanie Turner

**SUITE 300**  
9,797 sf

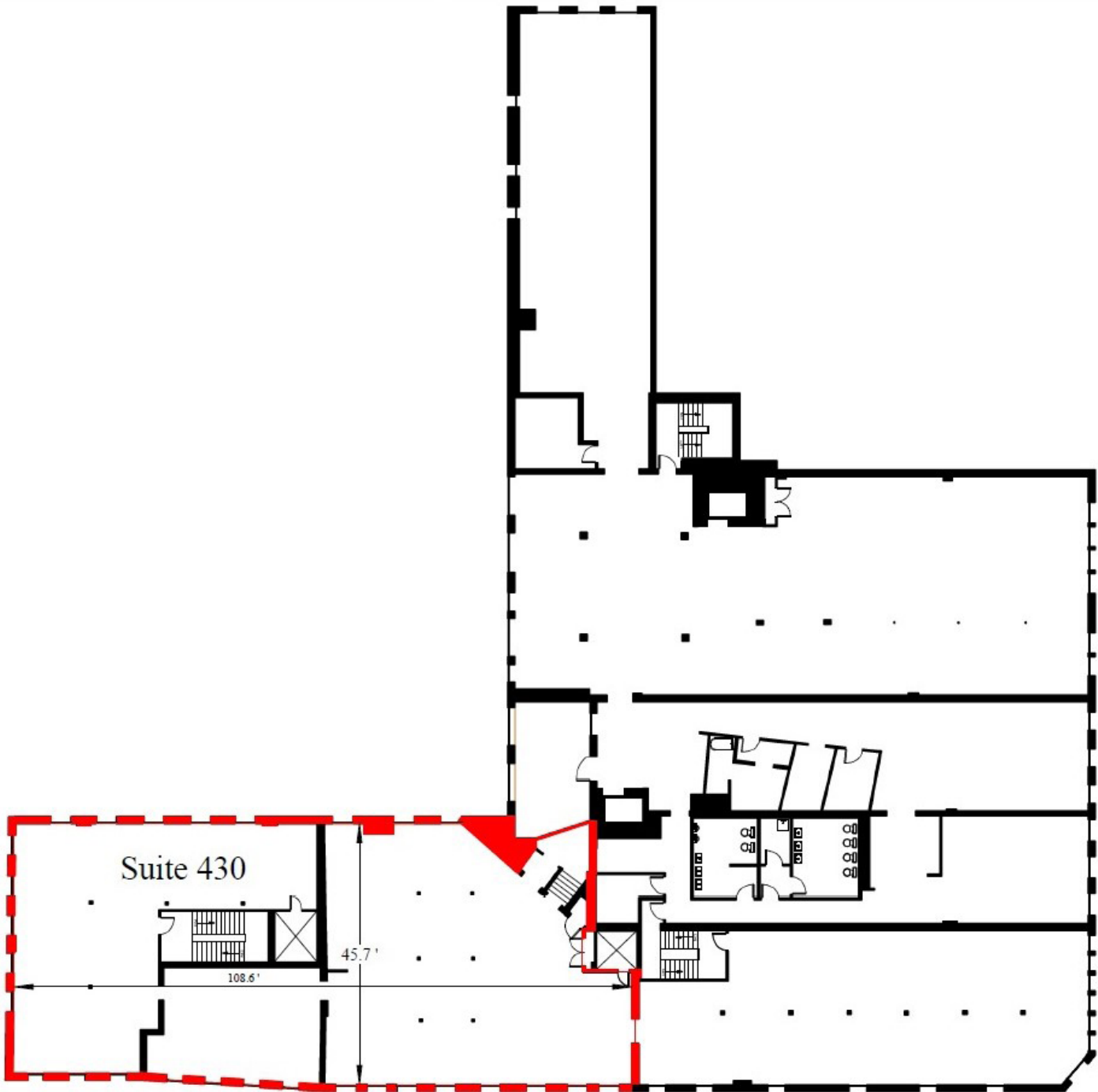


**SUITE 330**  
8,381 sf





**SUITE 430**  
5,658 sf





14 King Street | Saint John, NB

**Stephanie Turner**  
(506) 333-3442  
sturner@bbrokers.ca

12 Smythe Street, Suite 104  
Saint John, NB  
E2L 5G5

**bbrokers.ca**

**BRUNSWICK**  
BROKERS

*Brunswick Brokers Limited (Brunswick Brokers) and its agents and affiliates do not warrant, represent or guarantee the accuracy, completeness, validity or non-infringement of the information provided herein. Parties interested in a property should conduct their own independent investigations to determine the suitability of the property for their intended use and are strongly urged to discuss the property with their professional advisors. Brunswick Brokers assumes no liability or responsibility for any errors or omissions occurring in the information provided herein and shall not be liable for any direct, incidental, consequential, indirect or punitive damages arising out of the use of such information.*