



# BRUNSWICK

**BROKERS**  
COMMERCIAL REAL ESTATE

FOR LEASE  
**120 Millennium Drive**

Quispamsis | NB

**Stephanie Turner**  
**Brock Turner**

120 Millennium Drive | Quispamsis, NB  
Stephanie Turner & Brock Turner



## Property Highlights

Located on Millennium Drive in modern, attractive & well maintained commercial building with easy access and ample customer & staff paved parking. Approximately 2,000 sq ft of commercial space. Ideal for retail or office use. Close to all amenities, high traffic location – \$15.00/sqft net rent plus approx. 7.60 /sqft CAM & taxes. Tenant pays own utilities which are metered separately. Other tenants in building include orthodontist and second floor corporate offices.

**BRUNSWICK**  
BROKERS

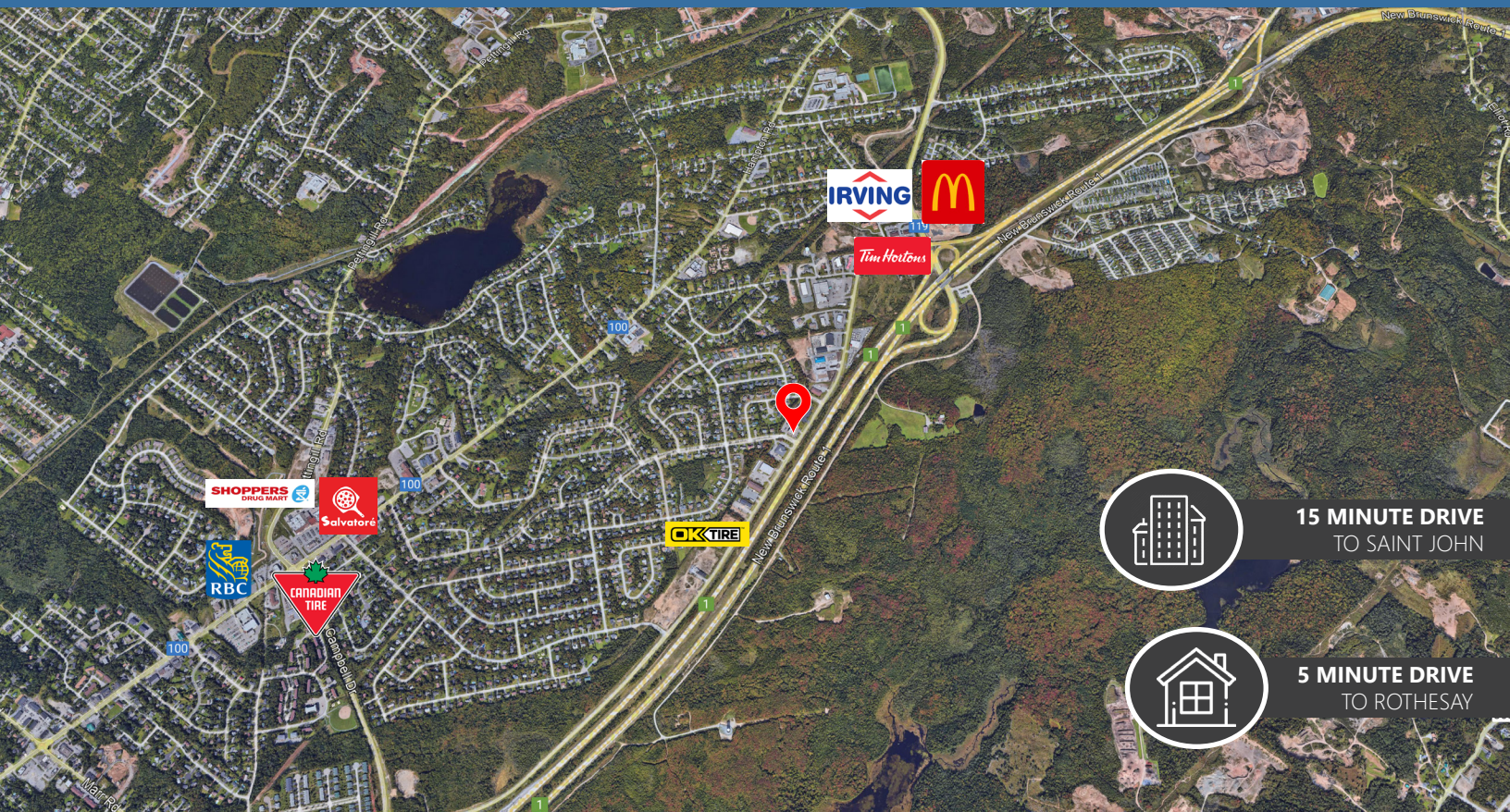
12 Smythe St, Suite 104  
Saint John, NB  
E2L 5G5

**Stephanie Turner**  
(506) 333-3442  
sturner@bbrokers.ca  
www.bbrokers.ca

**Brock Turner**  
(506) 271-2770  
bturner@bbrokers.ca  
www.bbrokers.ca



120 Millennium Drive | Quispamsis, NB  
Stephanie Turner & Brock Turner

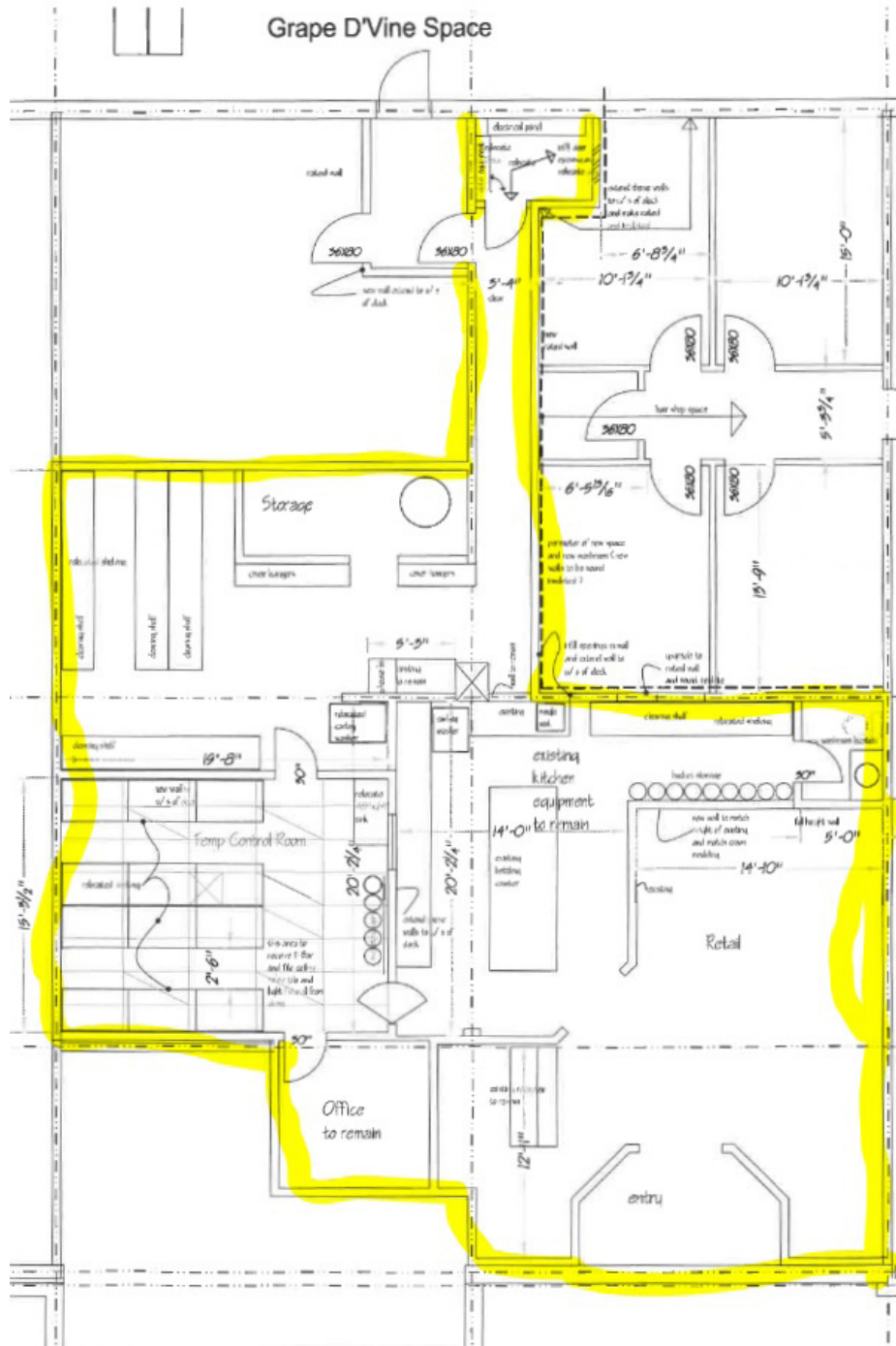


## Property Details

<b>LOCATION</b>	Quispamsis, NB
<b>PID</b>	30246508
<b>PROPERTY TYPE</b>	Retail
<b>LOT SIZE</b>	1.38 Acres
<b>AREA</b>	2,000 sf
<b>FLOOR LOCATION</b>	Ground
<b>BASE RENT</b>	\$15.00/sq ft
<b>ADDITIONAL RENT</b>	\$7.60/sq ft + tenant pays own utilities
<b>PARKING</b>	Ample paved surface parking at front and rear of building



# Floor Plan





120 Millennium Drive | Quispamsis, NB

**Stephanie Turner**  
(506) 333-3442  
sturner@bbrokers.ca

12 Smythe Street, Suite 104  
Saint John, NB  
E2L 5G5

**Brock Turner**  
(506) 271-2770  
bturner@bbrokers.ca

**bbrokers.ca**

**BRUNSWICK**  
BROKERS  
COMMERCIAL REAL ESTATE

*Brunswick Brokers Limited (Brunswick Brokers) and its agents and affiliates do not warrant, represent or guarantee the accuracy, completeness, validity or non-infringement of the information provided herein. Parties interested in a property should conduct their own independent investigations to determine the suitability of the property for their intended use and are strongly urged to discuss the property with their professional advisors. Brunswick Brokers assumes no liability or responsibility for any errors or omissions occurring in the information provided herein and shall not be liable for any direct, incidental, consequential, indirect or punitive damages arising out of the use of such information.*