



# **BRUNSWICK**

---

**BROKERS**  
**COMMERCIAL REAL ESTATE**

**New Construction Build-to-Suit in Quispamsis**

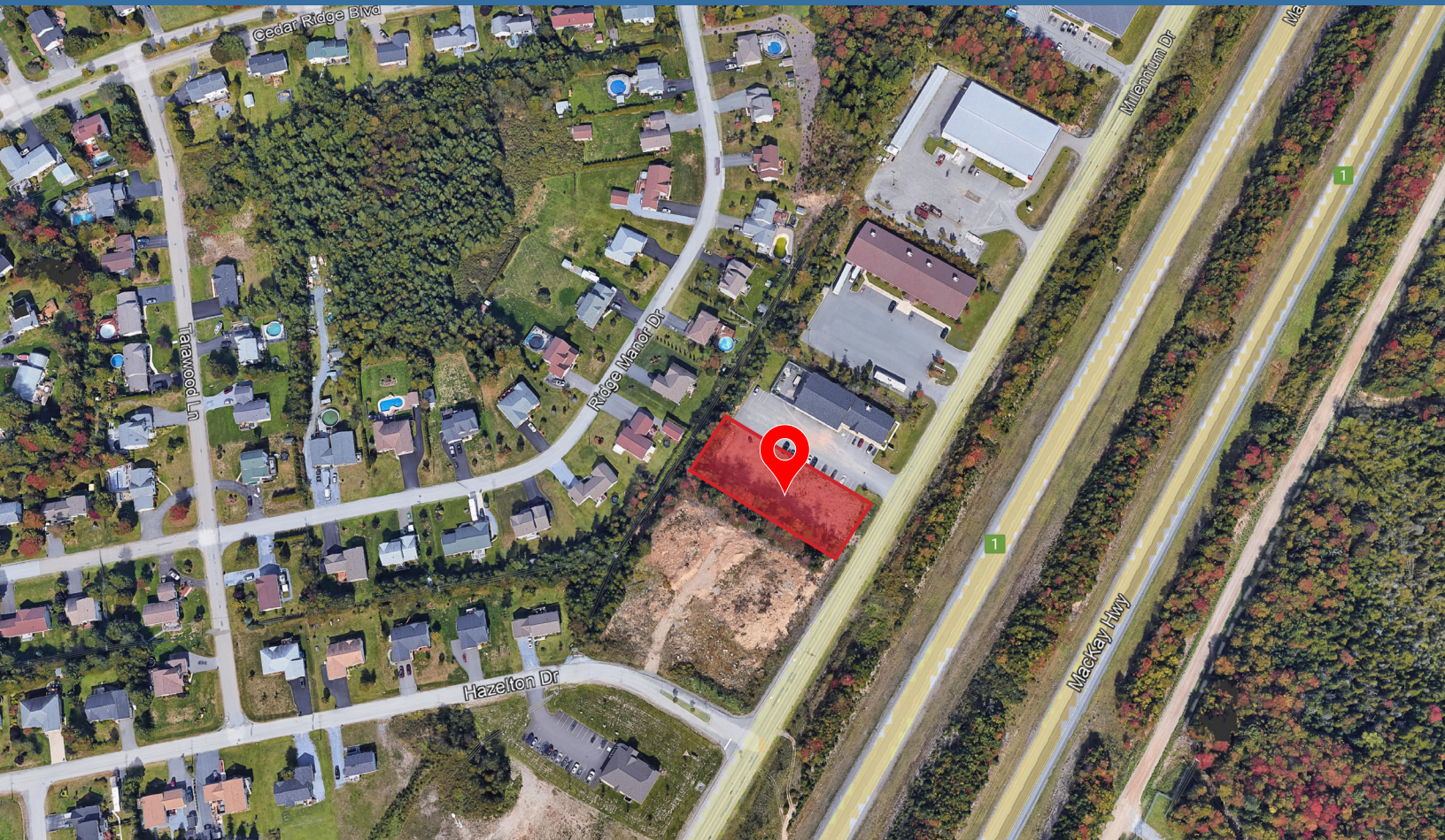
Build-to-Suit  
**148 Millennium Drive**

Quispamsis | NB

**Stephanie Turner**  
**Brock Turner**



148 Millennium Drive | Quispamsis, NB  
Stephanie Turner & Brock Turner



## Property Highlights

Are you looking for commercial space for lease in Quispamsis? Experienced and reputable landlord will build-to-suit on this 3/4 acre+/- parcel of land located at 148 Millennium Drive.

The lot is level and cleared and ready for development. Ideal for retail, professional services or medical clinic etc... Call today to discuss your needs and ideas! Easy access off multi-lane highway makes this location very desirable for new commercial development.

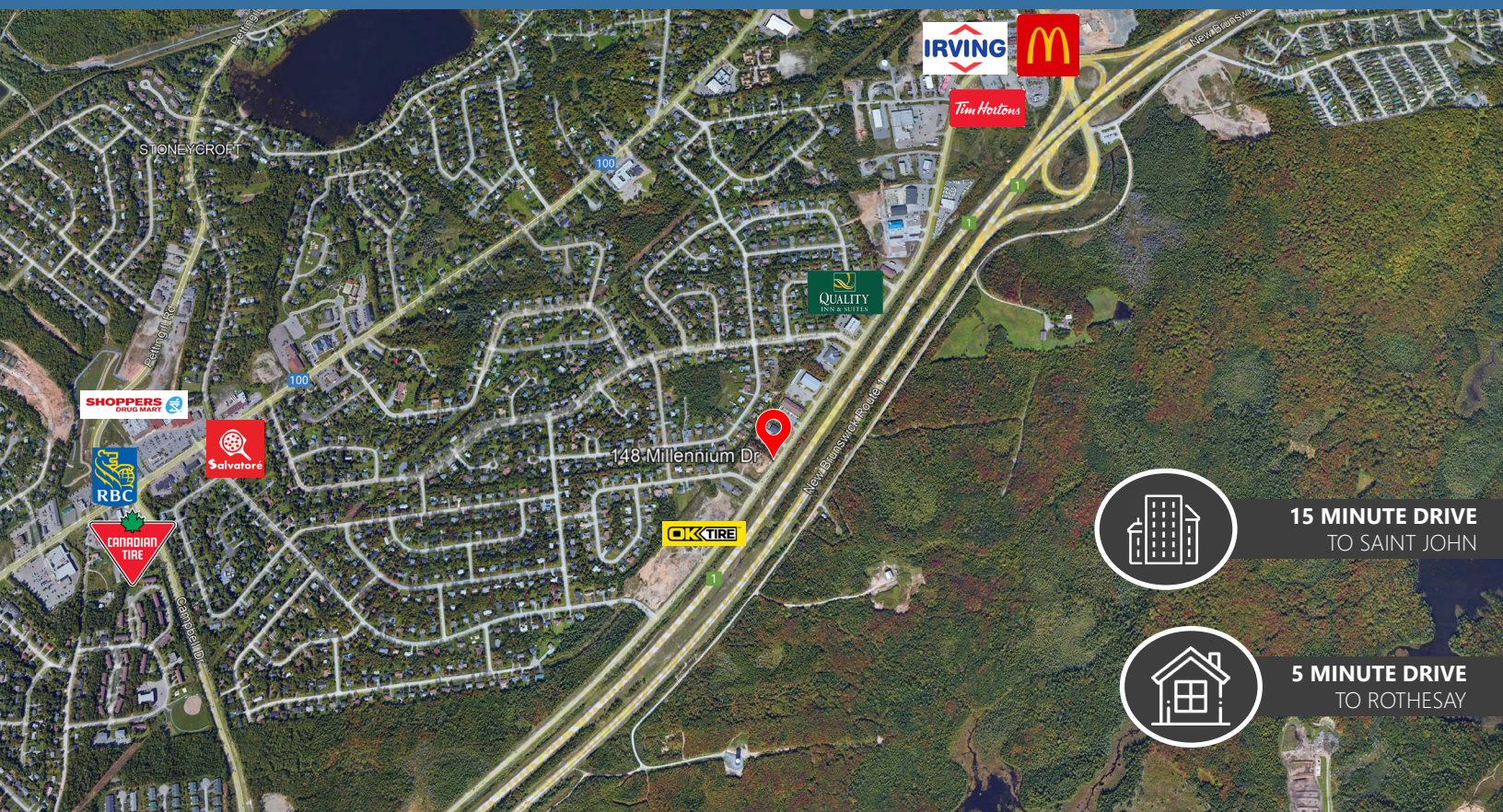
Lease rates to be negotiated based on final design and terms of lease.





# 148 Millennium Drive | Quispamsis, NB

## Stephanie Turner & Brock Turner



## Property Details

LOCATION	Quispamsis, NB
PID	30290829
PROPERTY TYPE	Mixed-Use
LOT SIZE	0.78 Acres







148 Millennium Drive | Quispamsis, NB

**Stephanie Turner**

(506) 333-3442  
sturner@bbrokers.ca

12 Smythe Street, Suite 104  
Saint John, NB  
E2L 5G5

**Brock Turner**

(506) 271-2770  
bturner@bbrokers.ca

**bbrokers.ca**

**BRUNSWICK**  
BROKERS  
COMMERCIAL REAL ESTATE

Brunswick Brokers Limited (Brunswick Brokers) and its agents and affiliates do not warrant, represent or guarantee the accuracy, completeness, validity or non-infringement of the information provided herein. Parties interested in a property should conduct their own independent investigations to determine the suitability of the property for their intended use and are strongly urged to discuss the property with their professional advisors. Brunswick Brokers assumes no liability or responsibility for any errors or omissions occurring in the information provided herein and shall not be liable for any direct, incidental, consequential, indirect or punitive damages arising out of the use of such information.