



BRUNSWICK

BROKERS

COMMERCIAL REAL ESTATE

**Street Level Opportunity at the Core
of Saint John's Entertainment District**

FOR LEASE

17 CANTERBURY STREET

Saint John | NB

Stephanie Turner

17 Canterbury Street | Saint John, NB
Stephanie Turner



Property Highlights

BASE RENT
\$14.00 psf

ADDITIONAL RENT
\$12.99 psf
(estimate)

Situated in the core of Saint John's restaurant and entertainment district, on Canterbury Street between King Street and Grannan Lane, lies this 2,381 sf space ideal for retail or office/professional services. Suite 190 is the perfect blend of heritage and modern, with an open concept design, glass-enclosed boardroom, wood beam ceilings, and exposed brick walls.

[CenterBeam Place](#) is a unique property that highlights the city's passion for heritage restoration. A dozen distinct 19th century buildings in one city block have been joined together around an atrium and outdoor courtyard to create an inviting atmosphere for street front retail and upper storey offices. It's an unparalleled location for office and specialty retail in the city of Saint John. The complex has received national recognition from the Canadian Urban Institute and is certified BOMA Best Silver for building management and environmental excellence.



**UPTOWN
LOCATION**



**BOMA BEST
CERTIFIED SILVER**



**PARKING
NEARBY**



**PROFESSIONALLY
MANAGED**



**TRANSIT
ACCESSIBLE**

BRUNSWICK
BROKERS
COMMERCIAL REAL ESTATE

Stephanie Turner
(506) 333-3442
sturner@bbrokers.ca
www.bbrokers.ca

12 Smythe St, Suite 104
Saint John, NB
E2L 5G5

17 Canterbury Street | Saint John, NB
Stephanie Turner



Property Details

AVAILABLE
IMMEDIATELY

LISTING ID	20119
NAME OF BUILDING	CenterBeam Place
PROPERTY TYPE	Office, Retail
YEAR RENOVATED	2014
NUMBER OF FLOORS	One
FLOOR LOCATION	Ground (with street frontage)
SIZE AVAILABLE	Suite 190: 2,381 sf
MAX CONTIGUOUS SPACE	2,381 sf
MIN DIVISIBLE SPACE	2,381 sf
PARKING	Metered street parking in front of property and numerous private and city-managed lots nearby
BOMA LEVEL	BEST® Certified Silver (formerly Level 3)

BRUNSWICK
BROKERS
COMMERCIAL REAL ESTATE

Stephanie Turner
(506) 333-3442
sturner@bbrokers.ca
www.bbrokers.ca

12 Smythe St, Suite 104
Saint John, NB
E2L 5G5

17 Canterbury Street | Saint John, NB
Stephanie Turner



Saint John

2016 POPULATION	70,785
POPULATION INCREASE (2016 - 2020)	1.7%
MEDIAN AGE	43.8
AVERAGE HOUSEHOLD INCOME	\$63,737

BRUNSWICK
BROKERS
COMMERCIAL REAL ESTATE

Stephanie Turner
(506) 333-3442
sturner@bbrokers.ca
www.bbrokers.ca

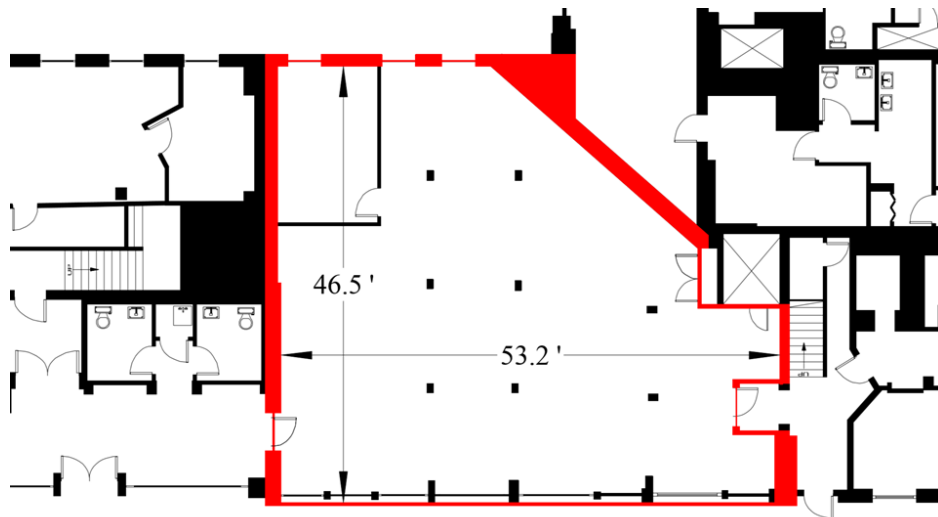
12 Smythe St, Suite 104
Saint John, NB
E2L 5G5

Property Photos

17 Canterbury Street | Saint John, NB
Stephanie Turner



Floor Plan



BRUNSWICK
BROKERS
COMMERCIAL REAL ESTATE

Stephanie Turner
(506) 333-3442
sturner@bbrokers.ca
www.bbrokers.ca

12 Smythe St, Suite 104
Saint John, NB
E2L 5G5



17 Canterbury Street | Saint John, NB

Stephanie Turner
(506) 333-3442
sturner@bbrokers.ca

12 Smythe Street, Suite 104
Saint John, NB
E2L 5G5

bbrokers.ca

BRUNSWICK
BROKERS
COMMERCIAL REAL ESTATE

Brunswick Brokers Limited (Brunswick Brokers) and its agents and affiliates do not warrant, represent or guarantee the accuracy, completeness, validity or non-infringement of the information provided herein. Parties interested in a property should conduct their own independent investigations to determine the suitability of the property for their intended use and are strongly urged to discuss the property with their professional advisors. Brunswick Brokers assumes no liability or responsibility for any errors or omissions occurring in the information provided herein and shall not be liable for any direct, incidental, consequential, indirect or punitive damages arising out of the use of such information.