

BRUNSWICK

BROKERS
COMMERCIAL REAL ESTATE

Heritage Building with Automotive/Industrial Past
Transformed into Modern Office Space

FOR LEASE

MARITIME SINGER BUILDING 604 ROTHESAY AVENUE

Saint John | NB

Stephanie Turner



604 Rothesay Avenue | Saint John, NB
Stephanie Turner



Property Highlights

BASE RENT
\$18.00 psf

ADDITIONAL RENT
\$6.29 psf

The Maritime Singer Building was built in 1912 as a car manufacturing facility. This stunning building has been painstakingly redeveloped into modern office space, all while maintaining its industrial vibe. Located just off the highway on Rothesay Avenue at the corner of Tim Street. The property offers great visibility with signage opportunity on a custom "monument" sign in front of the building.

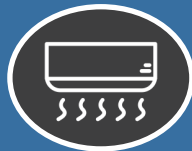
Building features high ceilings, exposed brick and beams, large energy efficient windows, in-floor radiant heat as well as heat pumps for additional heating and cooling. A total of 6,128 square feet is available. The vacancy is comprised of 4,183 square feet of open concept office space with a kitchenette and two washrooms. The adjacent 1,946 square feet can easily be connected. This area features ample natural light and double doors perfect for delivery.



**GRADE
LEVEL DOOR**



**HIGH
CEILINGS**



**AIR
CONDITIONING**



**SIGNAGE
OPPORTUNITIES**



**ON-SITE
PARKING**

BRUNSWICK
BROKERS
COMMERCIAL REAL ESTATE

Stephanie Turner
(506) 333-3442
sturner@bbrokers.ca
www.bbrokers.ca

12 Smythe St, Suite 104
Saint John, NB
E2L 5G5

604 Rothesay Avenue | Saint John, NB
Stephanie Turner



Property Details

AVAILABLE
IMMEDIATELY

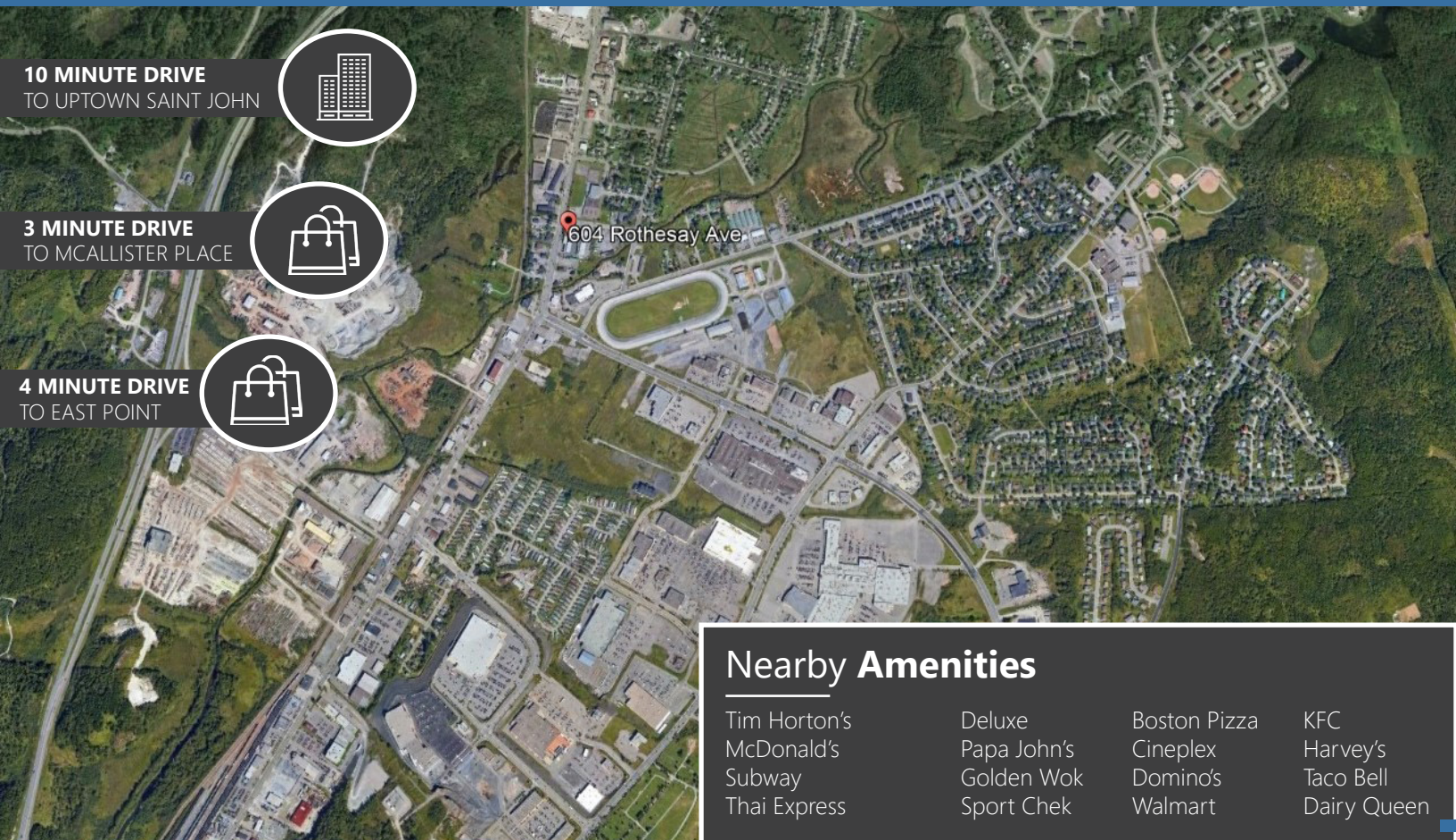
LISTING ID	20124
YEAR BUILT	1912
BUILDING SIZE	22,528 sf
PARKING	12 on-site paved parking stalls
MAX CONTIGUOUS SPACE	6,128 sf
MIN DIVISIBLE SPACE	1.945 sf

BRUNSWICK
BROKERS
COMMERCIAL REAL ESTATE

Stephanie Turner
(506) 333-3442
sturner@bbrokers.ca
www.bbrokers.ca

12 Smythe St, Suite 104
Saint John, NB
E2L 5G5

604 Rothesay Avenue | Saint John, NB
Stephanie Turner



Saint John

2016 POPULATION	70,785
POPULATION INCREASE (2016 - 2020)	1.7%
MEDIAN AGE	43.8
AVERAGE HOUSEHOLD INCOME	\$63,737

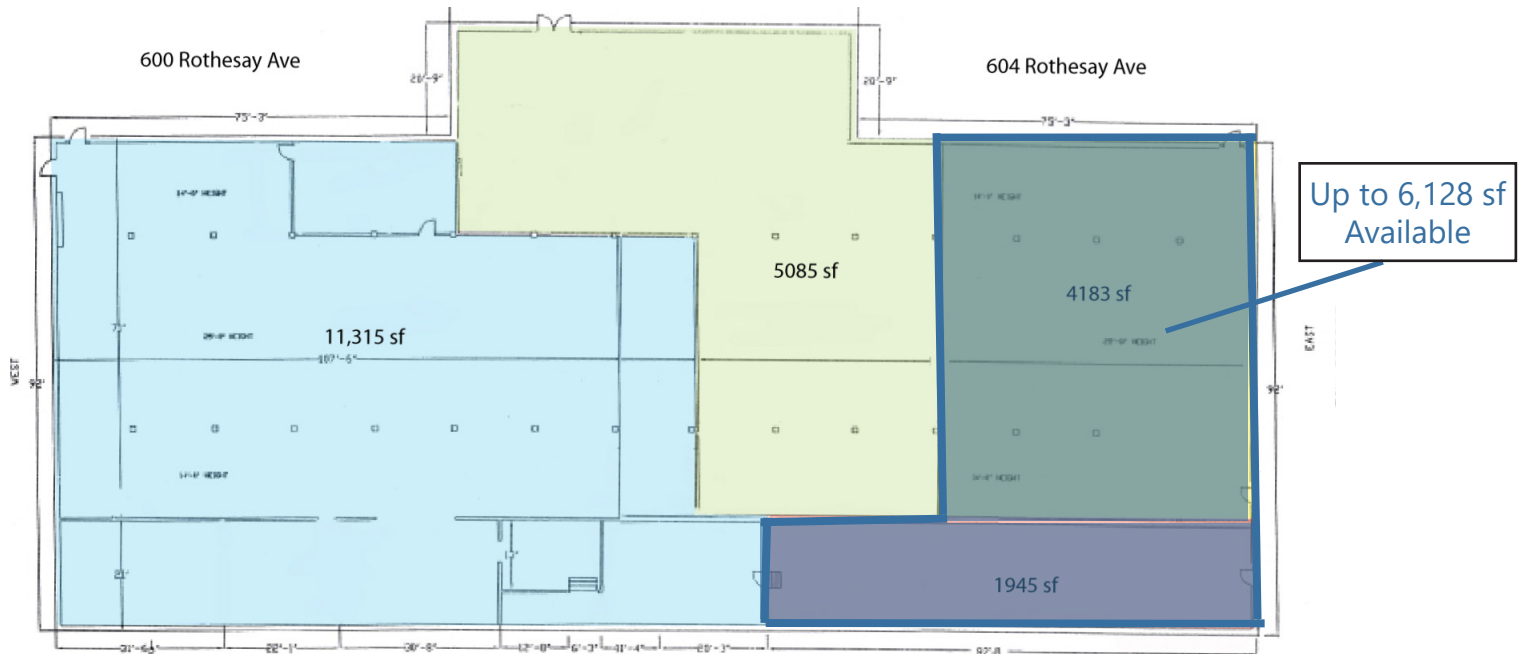
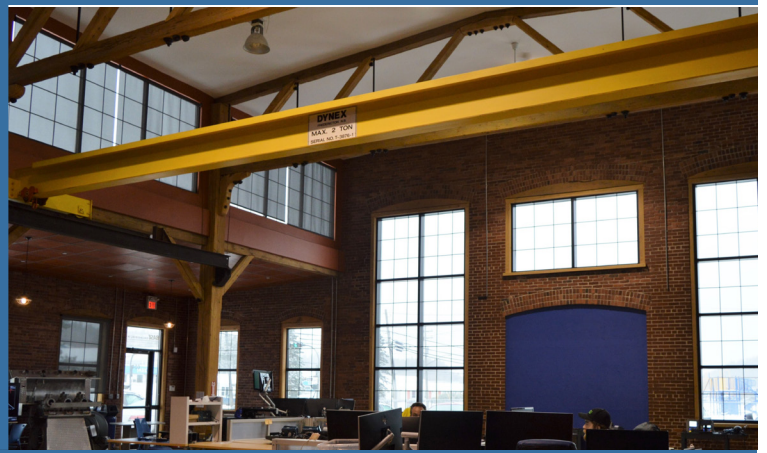
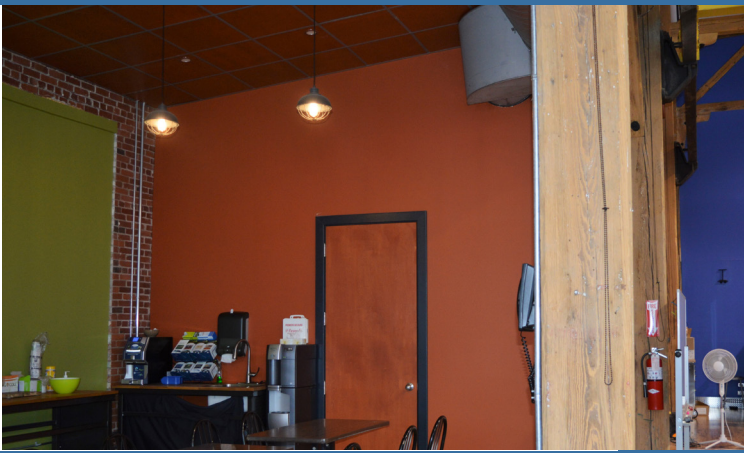
BRUNSWICK
BROKERS
COMMERCIAL REAL ESTATE

Stephanie Turner
(506) 333-3442
sturner@bbrokers.ca
www.bbrokers.ca

12 Smythe St, Suite 104
Saint John, NB
E2L 5G5

Property Photos

604 Rothesay Avenue | Saint John, NB
Stephanie Turner



BRUNSWICK
BROKERS
COMMERCIAL REAL ESTATE

Stephanie Turner
(506) 333-3442
sturner@bbrokers.ca
www.bbrokers.ca

12 Smythe St, Suite 104
Saint John, NB
E2L 5G5



604 Rothesay Avenue | Saint John, NB

Stephanie Turner
(506) 333-3442
sturner@bbrokers.ca

104-12 Smythe Street
Saint John, NB
E2L 5G5

bbrokers.ca

BRUNSWICK
BROKERS
COMMERCIAL REAL ESTATE

Brunswick Brokers Limited (Brunswick Brokers) and its agents and affiliates do not warrant, represent or guarantee the accuracy, completeness, validity or non-infringement of the information provided herein. Parties interested in a property should conduct their own independent investigations to determine the suitability of the property for their intended use and are strongly urged to discuss the property with their professional advisors. Brunswick Brokers assumes no liability or responsibility for any errors or omissions occurring in the information provided herein and shall not be liable for any direct, incidental, consequential, indirect or punitive damages arising out of the use of such information.