



BRUNSWICK
BROKERS
COMMERCIAL REAL ESTATE

**4,800 sq ft industrial building for sale
on 1.57 acres**

FOR LEASE
26 Whitebone Way

Saint John | NB

**Stephanie Turner
Brock Turner**

26 Whitebone Way | Saint John, NB
Stephanie Turner & Brock Turner



Property Highlights

NET RENT
\$12.00 PSF

LEASE RATE is \$12.00/sq ft(net)+ operating costs TBD.

4,800 sq ft Industrial Building for sale on 1.57 Acres. Recent exterior improvements and landscaping give this property great curb appeal.

Office area approx. 1,200 sq ft. Original warehouse area approx. 2,500 sq ft with 12' ceilings and 3 x 12' high grade loading doors. Newer warehouse addition of 1,080 sq ft with 16' ceilings and dock loading.

METAL ROOF: New portion 2019. Balance of roof approx. 1997 (original)
SECURITY SYSTEM with exterior cameras to remain

Well located near the entrance to the McAllister Industrial Park. Ideal location for companies in the energy sector or any industrial related business. The McAllister Industrial Park is growing with new construction nearby. Snowplowing provided by landlord.



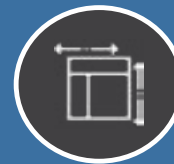
**MCALLISTER
INDUSTRIAL**



**DOCK & GRADE
LOADING**



**4,800 SF
SPACE**



**1.57
ACRES**

BRUNSWICK
BROKERS

12 Smythe St, Suite 104
Saint John, NB
E2L 5G5

Stephanie Turner
(506) 333-3442
sturner@bbrokers.ca
www.bbrokers.ca

Brock Turner
(506) 271-2770
bturner@bbrokers.ca
www.bbrokers.ca





LOCATION	McAllister Industrial Park
ZONING	Medium Industrial
YEAR BUILT	1997
RENOVATED	2001 (addition)
LOT SIZE	1.57 acres
BUILDING AREA	4,800 SF
NET RENT	\$12.00 PSF
OPERATING COSTS	TBD
TOTAL FLOORS	1
GRADE DOORS	3 x 12' High
DOCK DOORS	1
CLEAR HEIGHT	2,500 SF with 12' and 1,080 SF with 16'
PARKING	Paved surface parking adjacent to building on both sides



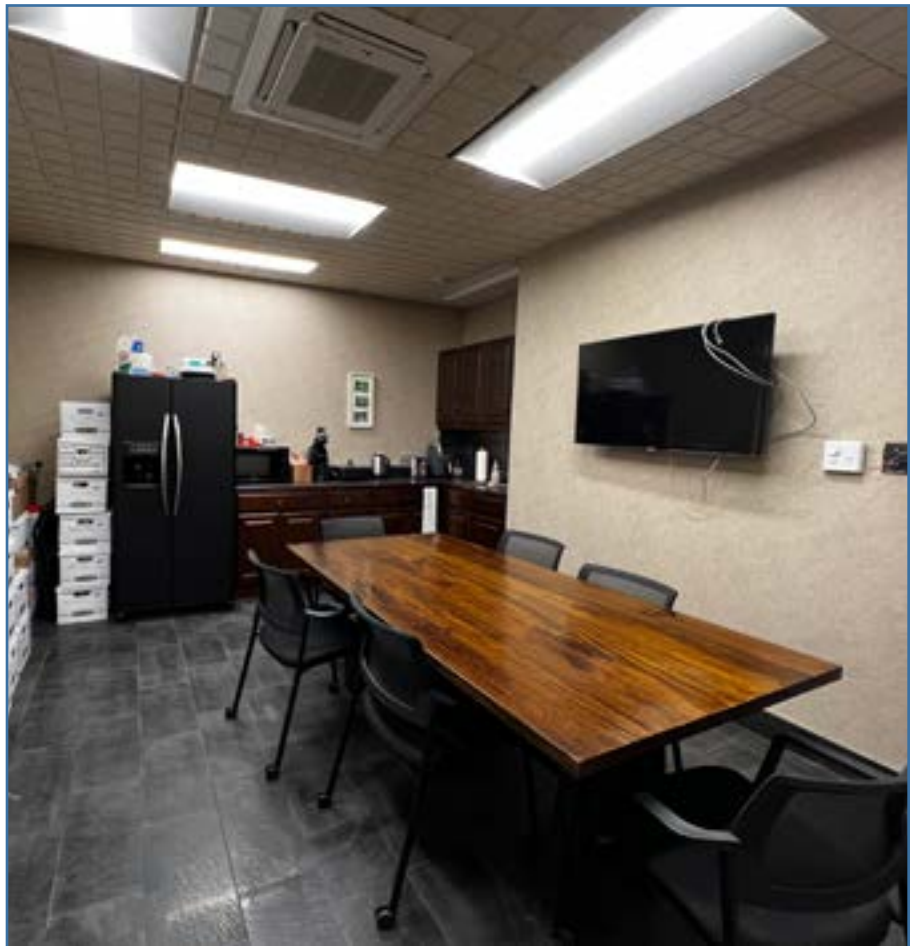
Property Photos

26 Whitebone Way | Saint John, NB
Stephanie Turner & Brock Turner



Property Photos

26 Whitebone Way | Saint John, NB
Stephanie Turner & Brock Turner





26 Whitebone Way | Saint John, NB

Stephanie Turner
(506) 333-3442
sturner@bbrokers.ca

104-12 Smythe Street
Saint John, NB
E2L 5G5

Brock Turner
(506) 271-2770
bturner@bbrokers.ca

bbrokers.ca

BRUNSWICK
BROKERS
COMMERCIAL REAL ESTATE

Brunswick Brokers Limited (Brunswick Brokers) and its agents and affiliates do not warrant, represent or guarantee the accuracy, completeness, validity or non-infringement of the information provided herein. Parties interested in a property should conduct their own independent investigations to determine the suitability of the property for their intended use and are strongly urged to discuss the property with their professional advisors. Brunswick Brokers assumes no liability or responsibility for any errors or omissions occurring in the information provided herein and shall not be liable for any direct, incidental, consequential, indirect or punitive damages arising out of the use of such information.